



**Loughcrew House** is a unique venue for your most memorable day. Our Wedding Co-ordinator and events team will work with you to deliver exactly what you want for your day. The house can accommodate 17 people and there is further accommodation in the Courtyard for 11 people.

We pride ourselves on attention to detail in designing and planning our bespoke events and in particular our Weddings. Our approved suppliers provide only the highest quality from menus to service and importantly this gives you more choice on style and price than a traditional Hotel Wedding.

This historic venue surrounded by 18th Century parkland provides an intimate and private experience like no other.

**St Oliver Plunkett's Family Church** proves very popular as a venue for Civil Ceremonies as do the many settings in the gardens.

**Plunkett's Bar** provides a beautiful setting for a drinks reception with the cairn topped hills of Loughcrew as a dramatic background.

**The Banquet Rooms** in the Courtyard can seat up to 140 people for Wedding Banquets.

We have space to add Marquees onto the Courtyard for larger capacities. 19th Century Bridal suite in the main house.

Accommodation in the House and apartments for up to 30 guests

**LOUGHCREW HOUSE, OLDCASTLE, CO MEATH**

+353 49 8541356 | [info@loughcrew.com](mailto:info@loughcrew.com) | [www.loughcrew.com](http://www.loughcrew.com)

Constructed from beautifully cut limestone blocks in the mid 19th century, the original House has thrice been destroyed by fire, most recently in 1964. The currently inhabited part of the house has been elegantly restored from the remains of the orangery heating rooms. Surrounded by 200 acres of rolling parkland below the historic Loughcrew Hills - home to the megalithic tombs of 6,000-years dead chieftain



### **Gilt edged multifarious rooms**

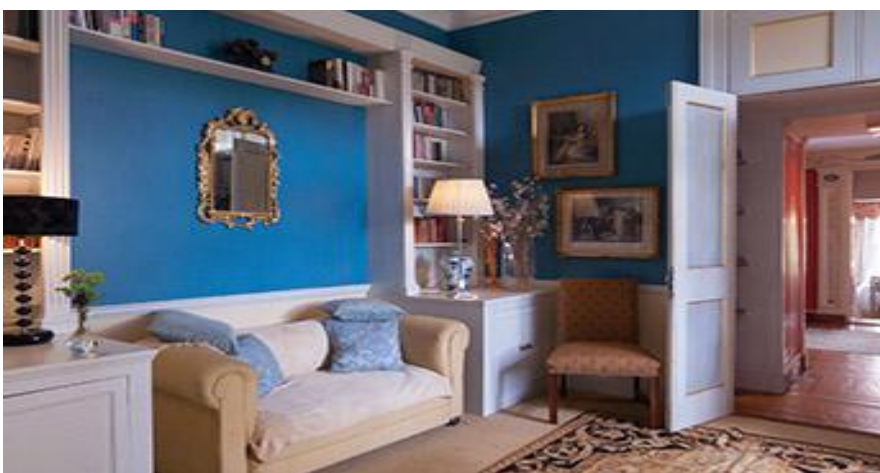
With most of the original house completely destroyed by fire more than 50 years ago, the current main entrance is through one of two lofty palm houses that bookend this arduous restoration.



The rough brick portico with its glazed canopy, leads straight into a surprise flurry of classical white stucco and rose walls.



The central spine of the house stretches from here for 18 metres, starting with a cerulean blue study complete with cosy wood-burning stove, shelves of books, and as a nod to the contemporary, a TV.



A dramatic living room follows on, with ample space for an eclectic mix of baby grand piano and country-house wood-burning stove, before concluding with a splendid 16 seater dining table.



Deep reveals separate the rooms, partition off by double doors. Hand-painted columns and friezes with classical motifs or quasi mythological scenes. Gilded details abound, the overall effect is sumptuous



A set of French doors open onto the extensive sun-drenched barbecue terrace that is a frequent favourite for al fresco dining.



A final set of doors reveal the generous kitchen – well-appointed for the catering challenges of a couple of dozen guests.



The second flag-floored and fan-lit palm house portico is close enough to the kitchen to double as a summertime dining room – its wrought-iron Romeo-and-Juliet balcony is a recent addition. Perfect photo opportunity!



## Bedrooms

### Master Suite

An unexpected stairway leads up from the entrance hall to the master suite, which boasts an opulent bedroom, complete with gilt framed cherubs; an ensuite bathroom, and an intimate dressing room, with Palladian style oculus window.



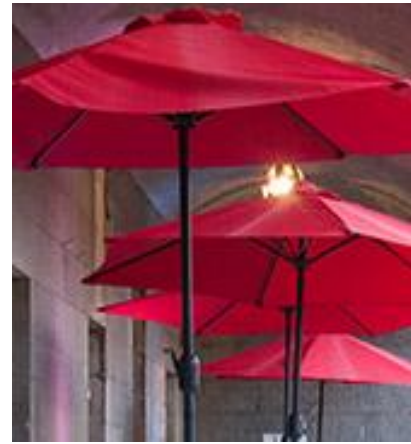
Most of the accommodation is to be found at the west end of the house beyond the kitchen, with seven bedrooms and three bathrooms variously staggered across three levels, each with a ample windows and an individual charms of their own.





## Courtyard

North facing windows of the house overlook an expansive cobbled courtyard, based on a Parisian design with cantilevered awnings, and enclosed by large reception rooms, including a 140 seater banqueting hall, a newly renovated bar and reception room, ideal for wedding ceremonies, retreats and events.





## Courtyard Apartment

A separate, well serviced self-catering apartment, occupying one side of the courtyard is also available on request.



Accommodation includes an open plan ground floor, with two double bedrooms – one ensuite – above. An open gallery makes it unsuitable for young children.

Also available on request, the Stable House with three double bedrooms .

## Outside

All that remains of the original Loughcrew House is its tall Ionic portico entrance, subsequently reassembled as a sort of mini-Acropolis overshadowing the private tennis court.



Part of the estate, is open to the public, with an excellent café, stunning 5 acre garden and many beautiful walks.

St. Oliver Plunkett's Church is also located in the gardens; it is the original seat of the Plunkett family and birthplace of St. Oliver Plunkett. The perfect venue for a civil ceremony.

